

The Condition of Education 2009

Indicator 21

Immediate Transition to College

The indicator and corresponding tables are taken directly from *The Condition of Education 2009*. Therefore, the page numbers may not be sequential.

Additional information about the survey data and supplementary notes can be found in the full report. For a copy of *The Condition of Education 2009*, visit the NCES website (<http://nces.ed.gov/pubsearch/pubsinfo.asp?pubid=2009081>) or contact ED PUBS at 1-877-4ED-PUBS.

Suggested Citation:

Planty, M., Hussar, W., Snyder, T., Kena, G., KewalRamani, A., Kemp, J., Bianco, K., Dinkes, R. (2009). *The Condition of Education 2009* (NCES 2009-081). National Center for Education Statistics, Institute of Education Sciences, U.S. Department of Education. Washington, DC.

Immediate Transition to College

The rate of college enrollment immediately after high school completion increased from 49 percent in 1972 to 67 percent in 1997 and ranged between 62 and 69 percent through 2007. Gaps in immediate enrollment rates by family income, parents' education, and race/ethnicity have persisted over time.

The immediate college enrollment rate is defined as the percentage of high school completers of a given year who enroll in 2- or 4-year colleges in the fall immediately after completing high school. Between 1972 and 1980, the overall immediate enrollment rate was approximately 50 percent (see table A-21-1). The rate then increased, reaching 67 percent by 1997. The enrollment rate declined through 2001 to 62 percent before increasing again to 67 percent in 2007.

Differences in the immediate college enrollment rate by family income, parents' education, and race/ethnicity groups have persisted over time. For family income, despite an overall narrowing of the gaps, the immediate college enrollment rates of high school completers from low- and middle-income families trailed those of their peers from high-income families by more than 10 percentage points in each year between 1972 and 2007. In 2007, the enrollment rate gap between students from low- and high-income families was 23 percentage points, and the gap between students from middle- and high-income families was 15 percentage points.

Compared with high school completers whose parents had a bachelor's degree or higher, those whose parents had less education have had lower immediate college enrollment rates each year since 1992 (the earliest year for which comparable data on parents' education are available) (see table A-21-2). In 2007, the gap in the immediate college enrollment rate was 35 percentage points between

students whose parents had a bachelor's degree or higher and students whose parents completed high school or a lower level of education and 21 percentage points between students whose parents had a bachelor's degree or higher and students whose parents had some college.

Although the immediate college enrollment rates of White, Black, and Hispanic high school completers each increased between 1972 and 2007, enrollment rates for Black and Hispanic high school completers have nonetheless been lower than for their White peers almost every year since 1985 (see table A-21-3). In 2007, the immediate college enrollment rate was 70 percent for White high school completers, compared with 56 percent for Black high school completers and 61 percent for Hispanic high school completers.

From 1972 through 2007, the immediate college enrollment rate increased for both male and female high school completers, but the increase was greater for females than for males (see table A-21-4). Thus, while the enrollment rate was 7 percentage points lower for females than for males in 1972, in 2007 the rate was about 67 percent for both sexes.



For more information: *Tables A-21-1 through A-21-4; Indicators 19, 20, and 23*

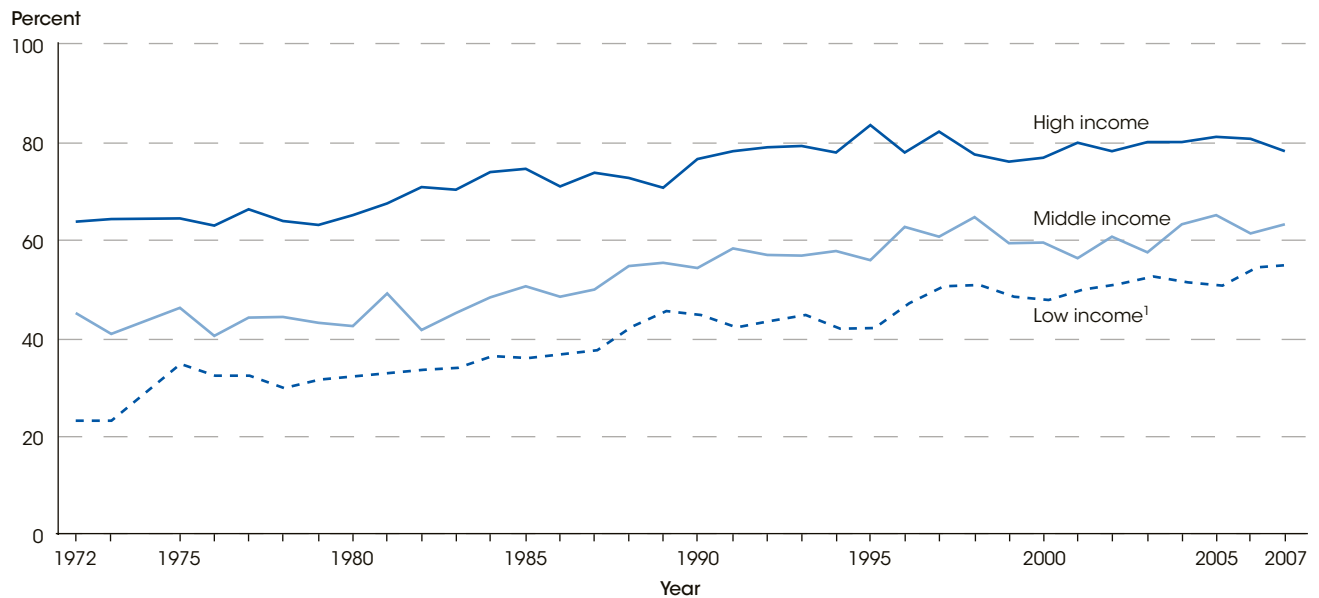
Glossary: *Educational attainment, High school completer*

Technical Notes

Includes high school completers ages 16–24, who accounted for about 98 percent of all high school completers in a given year. Enrollment rates were calculated from the Current Population Survey (CPS) data. Before 1992, *high school completer* referred to those who had completed 12 years of schooling. Beginning in 1992, *high school completer* has referred to those who have received a high school diploma or equivalency certificate. *Low income* refers to the bottom 20 percent of all family incomes, *high income* refers to the top 20 percent of all family incomes, and *middle income* refers to the

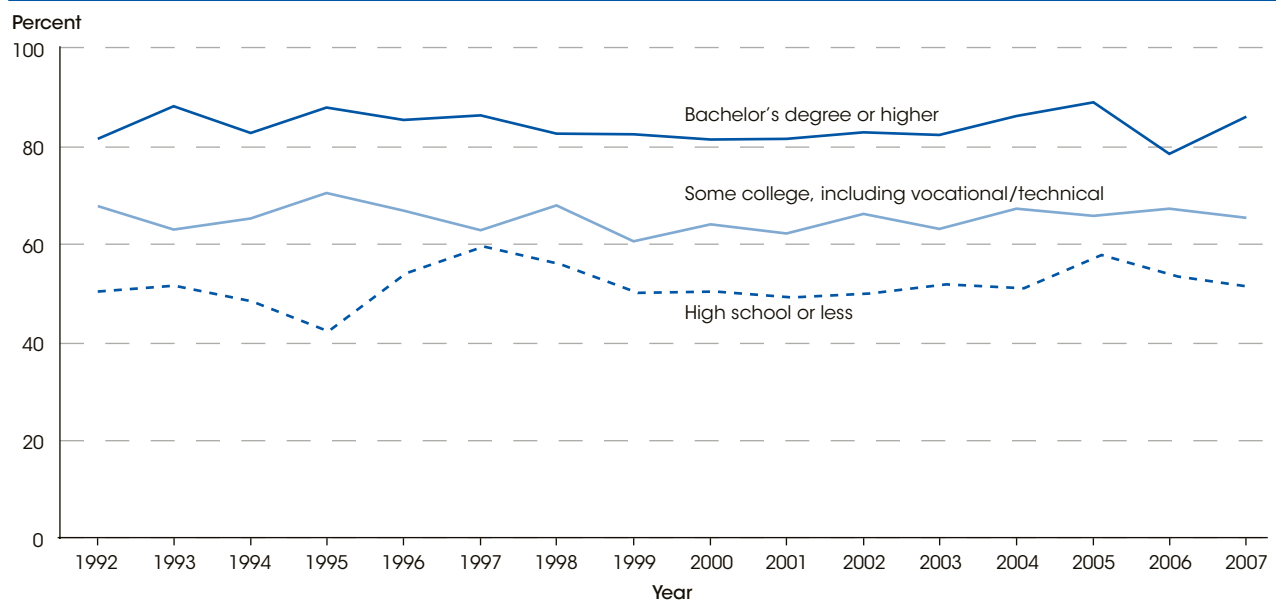
60 percent in between. Race categories exclude persons of Hispanic ethnicity. Parents' education refers to the highest education level attained by either parent or, in the absence of both parents, the highest level attained by the householder or the householder's spouse. Due to short-term data fluctuations associated with small sample sizes for the Black, Hispanic, and low-income categories, moving average rates are also presented and discussed in the indicator text. For more information on the CPS, educational attainment, family income, race/ethnicity, and parents' education, see *supplemental note 2*.

Figure 21-1. Percentage of high school completers enrolled in 2- or 4-year colleges in the October immediately following high school completion, by family income: 1972-2007



¹ Due to unreliable (or unstable) estimates associated with small sample sizes for the low-income category, moving average rates are presented. These rates were calculated as the average of the annual rates for the following 3 adjacent years: the year in question, the year immediately before it, and the year immediately after it. For 1972, 1973, 1975, and 2007, which do not have available data for 1 of the 3 adjacent years, the moving average rate was calculated as the average of the annual rates in the 2 available adjacent years.
 NOTE: Includes high school completers ages 16-24, who accounted for about 98 percent of all high school completers in each year. *Low income* refers to the bottom 20 percent of all family incomes, *high income* refers to the top 20 percent of all family incomes, and *middle income* refers to the 60 percent in between. Family income data were not available for 1974. For more information on the Current Population Survey (CPS), educational attainment, and family income, see *supplemental note 2*.
 SOURCE: U.S. Department of Commerce, Census Bureau, Current Population Survey (CPS), October Supplement, 1972-2007.

Figure 21-2. Percentage of high school completers enrolled in 2- or 4-year colleges in the October immediately following high school completion, by parents' education: 1992-2007



NOTE: Includes high school completers ages 16-24, who accounted for about 98 percent of all high school completers in each year. *High school completers* refers to those who have received a high school diploma or equivalency certificate. Parents' education refers to the highest education of the parent(s). If no parent resided with the student and the student was the householder or spouse of the householder, then the value of parents' education is set to missing. For more information on the Current Population Survey (CPS) and parents' education, see *supplemental note 2*.
 SOURCE: U.S. Department of Commerce, Census Bureau, Current Population Survey (CPS), October Supplement, 1992-2007.

Supplemental Tables to Indicator 21

Immediate Transition to College

Table A-21-1. Percentage of high school completers who were enrolled in 2- or 4-year colleges the October immediately following high school completion, by family income: 1972-2007

Year	Total	Low		Middle	High	Gap between High and	
		Annual	Moving average ¹			Low ²	Middle
1972	49.2	26.1	23.2	45.2	63.8	40.6	18.6
1973	46.6	20.3	23.2	40.9	64.4	41.2	23.5
1974	47.6	—	†	—	—	†	†
1975	50.7	31.2	34.7	46.2	64.5	29.8	18.3
1976	48.8	39.1	32.3	40.5	63.0	30.7	22.4
1977	50.6	27.7	32.4	44.2	66.3	33.9	22.0
1978	50.1	31.4	29.8	44.3	64.0	34.2	19.6
1979	49.3	30.5	31.6	43.2	63.2	31.6	19.9
1980	49.3	32.5	32.2	42.5	65.2	33.0	22.8
1981	53.9	33.6	32.9	49.2	67.6	34.7	18.4
1982	50.6	32.8	33.6	41.7	70.9	37.2	29.2
1983	52.7	34.6	34.0	45.2	70.3	36.4	25.1
1984	55.2	34.5	36.3	48.4	74.0	37.7	25.5
1985	57.7	40.2	35.9	50.6	74.6	38.6	24.0
1986	53.8	33.9	36.8	48.5	71.0	34.3	22.6
1987	56.8	36.9	37.6	50.0	73.8	36.2	23.9
1988	58.9	42.5	42.4	54.7	72.8	30.5	18.1
1989	59.6	48.1	45.6	55.4	70.7	25.0	15.2
1990	60.1	46.7	44.8	54.4	76.6	31.8	22.2
1991	62.5	39.5	42.2	58.4	78.2	36.0	19.8
1992	61.9	40.9	43.6	57.0	79.0	35.5	22.0
1993	62.6	50.4	44.7	56.9	79.3	34.6	22.4
1994	61.9	43.3	42.0	57.8	77.9	35.9	20.1
1995	61.9	34.2	42.1	56.0	83.5	41.3	27.4
1996	65.0	48.6	47.1	62.7	78.0	30.9	15.3
1997	67.0	57.0	50.6	60.7	82.2	31.6	21.5
1998	65.6	46.4	50.9	64.7	77.5	26.6	12.8
1999	62.9	49.4	48.5	59.4	76.1	27.6	16.7
2000	63.3	49.7	47.8	59.5	76.9	29.2	17.4
2001	61.7	43.8	50.0	56.3	79.9	30.0	23.6
2002	65.2	56.4	51.0	60.7	78.2	27.2	17.5
2003	63.9	52.8	52.6	57.6	80.1	27.6	22.6
2004	66.7	47.8	51.4	63.3	80.1	28.7	16.8
2005	68.6	53.5	50.8	65.1	81.2	30.4	16.1
2006	66.0	50.9	54.5	61.4	80.7	26.2	19.3
2007	67.2	58.4	55.0	63.3	78.2	23.2	14.8

— Not available (due to improper head of household coding for 1974).

† Not applicable.

¹ Due to unreliable (or unstable) estimates associated with small sample sizes for the low-income category, moving average rates are also presented. These rates were generally calculated as the average of the annual rates for the following 3 adjacent years: the year in question, the year immediately before it, and the year immediately after it. For 1972, 1973, 1975, and 2007, which do not have available data for 1 of the 3 adjacent years, the moving average rate was calculated as the average of the annual rates in the 2 available adjacent years.

² Refers to the moving average rates for the low-income category.

NOTE: Includes high school completers ages 16–24, who accounted for about 98 percent of all high school completers in each year. *Low income* refers to the bottom 20 percent of all family incomes, *high income* refers to the top 20 percent of all family incomes, and *middle income* refers to the 60 percent in between. For more information on the CPS, educational attainment, and family income, see *supplemental note 2*. Detail may not sum to totals because of rounding.

SOURCE: U.S. Department of Commerce, Census Bureau, Current Population Survey (CPS), October Supplement, 1972–2007.

Table A-21-2. Percentage of high school completers who were enrolled in 2- or 4-year colleges the October immediately following high school completion, by parents' education: 1992-2007

Year	High school or less	Some college, including vocational/technical	Bachelor's degree or higher	Not available ¹	Gap between Bachelor's degree or higher and	
					High school or less	Some college, including vocational/technical
1992	50.1	67.5	81.3	38.0	31.2	13.8
1993	51.3	62.7	87.9	42.0	36.6	25.2
1994	48.1	65.0	82.5	43.1	34.4	17.6
1995	41.9	70.2	87.7	30.8	45.8	17.5
1996	53.8	66.6	85.2	45.6	31.3	18.5
1997	59.3	62.6	86.1	51.3	26.8	23.5
1998	55.7	67.7	82.3	50.1	26.6	14.6
1999	49.8	60.3	82.2	53.1	32.4	21.9
2000	50.1	63.8	81.2	50.5	31.1	17.4
2001	48.9	62.0	81.3	41.9	32.4	19.2
2002	49.7	65.9	82.6	58.7	32.8	16.7
2003	51.6	62.9	82.1	48.8	30.5	19.2
2004	50.8	67.0	85.9	53.6	35.0	18.9
2005	57.6	65.6	88.8	54.8	31.2	23.2
2006	53.2	67.0	78.2	54.6	25.0	11.3
2007	50.9	65.2	85.8	55.3	34.9	20.6

¹ Information on parents' education was not available for the following three groups of students: (1) those who did not live with their parents and were classified as a householder or the spouse of a householder; (2) those who did not live with their parents and who were not classified as a householder or the spouse of a householder yet educational attainment was not reported for the householder or spouse of the householder; and (3) those who lived with parents whose educational attainment was not reported (about 7-14 percent of high school completers ages 16-24 were in this category for the period covered).

NOTE: Includes high school completers ages 16-24, who accounted for about 98 percent of all high school completers in each year. *High school completers* refers to those who have received a high school diploma or equivalency certificate. Parents' education refers to the highest education of the parent(s). If no parent resided with the student and the student was the householder or spouse of the householder, then the value of parents' education is set to missing. For more information on the CPS, educational attainment, and parents' education, see *supplemental note 2*.

SOURCE: U.S. Department of Commerce, Census Bureau, Current Population Survey (CPS), October Supplement, 1992-2007.

Immediate Transition to College

Table A-21-3. Percentage of high school completers who were enrolled in 2- or 4-year colleges the October immediately following high school completion, by race/ethnicity: 1972-2007

Year	White	Black		Hispanic		Gap between White and	
		Annual	Moving average ¹	Annual	Moving average ¹	Black ²	Hispanic ²
1972	49.7	44.6	38.4	45.0	49.9	11.3	-0.2
1973	47.8	32.5	41.4	54.1	48.8	6.4!	-1.0
1974	47.2	47.2	40.5	46.9	53.2	6.7!	-6.0
1975	51.1	41.7	44.5	58.0	52.7	6.6!	-1.5
1976	48.8	44.4	45.3	52.7	53.6	3.5!	-4.8
1977	50.8	49.5	46.8	50.8	48.8	4.0!	2.1!
1978	50.5	46.4	47.5	42.0	46.1	3.0!	4.4!
1979	49.9	46.7	45.2	45.0	46.3	4.7!	3.7!
1980	49.8	42.7	44.0	52.3	49.6	5.9!	0.3!
1981	54.9	42.7	40.3	52.1	48.7	14.6	6.2!
1982	52.7	35.8	38.8	43.2	49.4	13.9	3.3!
1983	55.0	38.2	38.0	54.2	46.7	17.1	8.4!
1984	59.0	39.8	39.9	44.3	49.3	19.1	9.7!
1985	60.1	42.2	39.5	51.0	46.1	20.5	13.9!
1986	56.8	36.9	43.5	44.0	42.3	13.3	14.5!
1987	58.6	52.2	44.2	33.5	45.0	14.4	13.6!
1988	61.1	44.4	49.7	57.1	48.5	11.4	12.6!
1989	60.7	53.4	48.0	55.1	52.7	12.7	8.0!
1990	63.0	46.8	48.9	42.7	52.5	14.1	10.6!
1991	65.4	46.4	47.2	57.2	52.6	18.2	12.8!
1992	64.3	48.2	50.0	55.0	58.2	14.3	6.1!
1993	62.9	55.6	51.3	62.2	55.7	11.6	7.3!
1994	64.5	50.8	52.4	49.1	55.0	12.1	9.5!
1995	64.3	51.2	52.9	53.7	51.6	11.4	12.7
1996	67.4	56.0	55.4	50.8	57.6	12.1	9.8!
1997	68.2	58.5	58.8	65.6	55.3	9.4	12.9
1998	68.5	61.9	59.8	47.4	51.9	8.8	16.6
1999	66.3	58.9	58.6	42.3	47.4	7.7!	18.9
2000	65.7	54.9	56.3	52.9	48.6	9.4	17.1
2001	64.2	54.6	56.3	51.7	52.7	7.8!	11.4
2002	68.9	59.4	57.2	53.3	54.7	11.7	14.1
2003	66.2	57.5	60.0	58.6	57.7	6.2!	8.5!
2004	68.8	62.5	58.8	61.8	57.7	10.0	11.1
2005	73.2	55.7	58.2	54.0	57.5	15.0	15.7
2006	68.5	55.5	55.6	57.9	58.5	12.9	10.0
2007	69.5	55.7	55.6	64.0	60.9	13.9	8.7!

! Interpret data with caution (estimates are unstable).

¹ Due to unreliable (or unstable) estimates associated with small sample sizes for the Black and Hispanic categories, moving average rates are also presented. Moving average rates were generally calculated as the average of the annual rates for the following 3 adjacent years: the year in question, the year immediately before it, and the year immediately after it. For 1972 and 2007, which do not have available data for 1 of the 3 adjacent years, the moving average rate was calculated as the average of the annual rates in the 2 available adjacent years.

² Refers to the moving average rates for the Black and Hispanic categories.

NOTE: Includes high school completers ages 16-24, who accounted for about 98 percent of all high school completers in each year. Race categories exclude persons of Hispanic ethnicity. For more information on the CPS, educational attainment, and race/ethnicity, see *supplemental note 2*. Detail may not sum to totals because of rounding.

SOURCE: U.S. Department of Commerce, Census Bureau, Current Population Survey (CPS), October Supplement, 1972-2007.

Table A-21-4. Percentage of high school completers who were enrolled in 2- or 4-year colleges the October immediately following high school completion, by sex and type of institution: 1972-2007

Year	Male			Female		
	Total	2-year ¹	4-year ¹	Total	2-year ¹	4-year ¹
1972	52.7	—	—	46.0	—	—
1973	50.0	14.6	35.4	43.4	15.2	28.2
1974	49.4	16.6	32.8	45.9	13.9	32.0
1975	52.6	19.0	33.6	49.0	17.4	31.6
1976	47.2	14.5	32.7	50.3	16.6	33.8
1977	52.1	17.2	35.0	49.3	17.8	31.5
1978	51.1	15.6	35.5	49.3	18.3	31.0
1979	50.4	16.9	33.5	48.4	18.1	30.3
1980	46.7	17.1	29.7	51.8	21.6	30.2
1981	54.8	20.9	33.9	53.1	20.1	33.0
1982	49.1	17.5	31.6	52.0	20.6	31.4
1983	51.9	20.2	31.7	53.4	18.4	35.1
1984	56.0	17.7	38.4	54.5	21.0	33.5
1985	58.6	19.9	38.8	56.8	19.3	37.5
1986	55.8	21.3	34.5	51.9	17.3	34.6
1987	58.3	17.3	41.0	55.3	20.3	35.0
1988	57.1	21.3	35.8	60.7	22.4	38.3
1989	57.6	18.3	39.3	61.6	23.1	38.5
1990	58.0	19.6	38.4	62.2	20.6	41.6
1991	57.9	22.9	35.0	67.1	26.8	40.3
1992	60.0	22.1	37.8	63.8	23.9	40.0
1993	59.9	22.9	37.0	65.2	22.8	42.4
1994	60.6	23.0	37.5	63.2	19.1	44.1
1995	62.6	25.3	37.4	61.3	18.1	43.2
1996	60.1	21.5	38.5	69.7	24.6	45.1
1997	63.6	21.4	42.2	70.3	24.1	46.2
1998	62.4	24.4	38.0	69.1	24.3	44.8
1999	61.4	21.0	40.5	64.4	21.1	43.3
2000	59.9	23.1	36.8	66.2	20.0	46.2
2001	59.7	18.6	41.1	63.6	20.7	42.9
2002	62.1	20.5	41.7	68.3	23.0	45.3
2003	61.2	21.9	39.3	66.5	21.0	45.5
2004	61.4	21.8	39.6	71.5	23.1	48.5
2005	66.5	24.7	41.8	70.4	23.4	47.0
2006	65.8	24.9	40.9	66.1	24.5	41.7
2007	66.1	22.7	43.4	68.3	25.5	42.8

—Not available (data on type of institution were not collected until 1973).

¹ From 1973 through 1986, due to a skip pattern in the Current Population Survey (CPS), about 3–9 percent of high school completers ages 16–24 who enrolled in college immediately were not asked the question about the type of institutions attended. Such respondents were assumed to have had the same probability of enrolling at a 2- or 4-year institution as those who were asked the question.

NOTE: Includes high school completers ages 16–24, who accounted for about 98 percent of all high school completers in each year. For more information on the CPS and educational attainment, see *supplemental note 2*. Detail may not sum to totals because of rounding.

SOURCE: U.S. Department of Commerce, Census Bureau, Current Population Survey (CPS), October Supplement, 1972–2007.

Immediate Transition to College

Table S-21-1. Standard errors for the percentage of high school completers who were enrolled in 2- or 4-year colleges the October immediately following high school completion, by family income: 1972-2007

Year	Total	Low		Middle	High	Gap between High and	
		Annual	Moving average			Low	Middle
1972	1.31	3.45	2.35	1.75	2.19	3.21	2.80
1973	1.29	3.18	2.35	1.70	2.13	3.18	2.73
1974	1.28	†	†	†	†	†	†
1975	1.26	3.59	2.74	1.69	2.09	3.45	2.69
1976	1.31	4.20	2.17	1.76	2.06	2.99	2.71
1977	1.29	3.54	2.22	1.76	2.01	2.99	2.67
1978	1.28	3.74	2.13	1.74	2.05	2.96	2.69
1979	1.28	3.78	2.11	1.74	2.04	2.94	2.68
1980	1.30	3.47	2.14	1.78	2.08	2.98	2.73
1981	1.30	3.90	2.11	1.75	2.09	2.97	2.72
1982	1.36	3.81	2.29	1.81	2.13	3.13	2.79
1983	1.39	4.02	2.20	1.88	2.17	3.09	2.87
1984	1.37	3.62	2.26	1.89	2.09	3.08	2.82
1985	1.45	4.14	2.18	2.02	2.16	3.07	2.96
1986	1.43	3.59	2.23	1.97	2.28	3.19	3.01
1987	1.46	3.88	2.21	2.07	2.16	3.09	2.99
1988	1.57	4.39	2.54	2.14	2.52	3.58	3.30
1989	1.64	4.56	2.66	2.28	2.61	3.73	3.47
1990	1.60	4.76	2.63	2.14	2.54	3.65	3.32
1991	1.62	4.50	2.62	2.25	2.39	3.55	3.28
1992	1.58	4.37	2.60	2.18	2.35	3.50	3.20
1993	1.59	4.56	2.55	2.15	2.46	3.54	3.26
1994	1.43	3.96	2.27	1.94	2.22	3.17	2.95
1995	1.41	3.56	2.16	2.00	1.86	2.85	2.73
1996	1.42	3.78	2.18	1.95	2.27	3.15	3.00
1997	1.38	3.66	2.14	1.97	1.98	2.91	2.79
1998	1.38	3.62	2.11	1.89	2.21	3.05	2.91
1999	1.38	3.66	2.11	1.90	2.22	3.06	2.92
2000	1.41	3.67	2.14	1.97	2.22	3.09	2.97
2001	1.41	3.61	2.07	1.97	2.08	2.93	2.86
2002	1.31	3.60	2.14	1.78	2.11	3.00	2.76
2003	1.35	3.83	2.19	1.87	2.02	2.98	2.76
2004	1.31	3.95	2.24	1.79	1.98	2.99	2.67
2005	1.31	3.86	2.26	1.81	1.98	3.00	2.68
2006	1.33	3.92	2.18	1.82	2.01	2.97	2.71
2007	1.26	3.57	2.65	1.73	2.01	3.32	2.65

† Not applicable.

SOURCE: U.S. Department of Commerce, Census Bureau, Current Population Survey (CPS), October Supplement, 1972-2007.

Table S-21-2. Standard errors for the percentage of high school completers who were enrolled in 2- or 4-year colleges the October immediately following high school completion, by parents' education: 1992-2007

Year	High school or less	Some college, including vocational/technical	Bachelor's degree or higher	Not available	Gap between Bachelor's degree or higher and	
					High school or less	Some college, including vocational/technical
1992	2.60	3.03	2.44	5.36	3.57	3.89
1993	2.61	3.28	2.09	5.00	3.35	3.89
1994	2.55	2.77	2.06	4.22	3.28	3.46
1995	2.51	2.46	1.79	4.20	3.08	3.04
1996	2.54	2.73	2.01	4.42	3.24	3.39
1997	2.63	2.74	1.86	3.95	3.22	3.31
1998	2.53	2.56	2.12	4.17	3.30	3.33
1999	2.60	2.67	1.99	4.11	3.28	3.33
2000	2.62	2.76	2.06	4.28	3.33	3.45
2001	2.63	2.61	2.06	4.36	3.34	3.33
2002	2.48	2.51	1.88	3.96	3.11	3.14
2003	2.64	2.58	1.94	3.99	3.28	3.23
2004	2.42	2.51	1.71	5.02	2.96	3.04
2005	2.34	2.54	1.66	4.96	2.87	3.04
2006	2.63	2.35	2.01	5.56	3.31	3.09
2007	2.43	2.39	1.61	5.13	2.92	2.88

SOURCE: U.S. Department of Commerce, Census Bureau, Current Population Survey (CPS), October Supplement, 1992-2007.

Immediate Transition to College

Table S-21-3. Standard errors for the percentage of high school completers who were enrolled in 2- or 4-year colleges the October immediately following high school completion, by race/ethnicity: 1972-2007

Year	White	Black		Hispanic		Gap between White and	
		Annual	Moving average	Annual	Moving average	Black	Hispanic
1972	1.42	4.62	3.18	9.74	6.64	3.48	6.79
1973	1.40	4.30	2.62	9.01	5.33	2.97	5.51
1974	1.39	4.58	2.63	8.94	5.09	2.98	5.28
1975	1.37	4.69	2.72	8.44	4.88	3.04	5.07
1976	1.43	4.82	2.72	7.97	4.68	3.07	4.89
1977	1.41	4.65	2.70	7.96	4.72	3.05	4.92
1978	1.41	4.51	2.67	8.44	4.69	3.02	4.90
1979	1.41	4.69	2.62	7.92	4.83	2.98	5.03
1980	1.43	4.44	2.61	8.70	4.78	2.98	4.98
1981	1.44	4.44	2.50	8.19	4.68	2.89	4.90
1982	1.52	4.33	2.57	7.96	4.94	2.98	5.17
1983	1.55	4.34	2.47	8.96	4.72	2.91	4.97
1984	1.54	4.15	2.54	7.67	4.89	2.97	5.13
1985	1.62	4.78	2.55	9.76	5.18	3.02	5.43
1986	1.62	4.38	2.71	8.85	5.20	3.15	5.44
1987	1.65	4.82	2.65	8.25	5.04	3.13	5.30
1988	1.79	4.91	2.98	10.14	5.99	3.48	6.25
1989	1.85	5.27	2.98	10.51	6.33	3.51	6.59
1990	1.80	5.08	2.97	10.82	5.70	3.47	5.98
1991	1.82	5.25	2.93	9.58	5.52	3.45	5.81
1992	1.84	4.92	2.98	8.50	5.04	3.50	5.36
1993	1.85	5.28	2.97	8.22	4.97	3.50	5.30
1994	1.61	4.42	2.52	6.28	3.23	2.99	3.61
1995	1.64	4.20	2.40	4.92	3.18	2.90	3.58
1996	1.67	4.03	2.41	5.79	2.96	2.93	3.40
1997	1.64	4.12	2.35	4.53	2.93	2.87	3.36
1998	1.61	4.05	2.31	4.92	2.79	2.81	3.22
1999	1.64	3.86	2.31	4.76	2.84	2.83	3.28
2000	1.66	4.11	2.34	5.03	2.96	2.87	3.39
2001	1.64	3.97	2.25	5.33	2.80	2.79	3.25
2002	1.53	3.84	2.32	4.55	2.77	2.78	3.17
2003	1.61	4.25	2.27	4.61	2.68	2.79	3.13
2004	1.57	3.77	2.34	4.76	2.60	2.82	3.04
2005	1.52	4.15	2.35	4.18	2.52	2.80	2.94
2006	1.60	4.33	2.35	4.18	2.43	2.84	2.91
2007	1.49	3.78	2.85	4.22	2.98	3.21	3.33

SOURCE: U.S. Department of Commerce, Census Bureau, Current Population Survey (CPS), October Supplement, 1972-2007.

Table S-21-4. Standard errors for the percentage of high school completers who were enrolled in 2- or 4-year colleges the October immediately following high school completion, by sex and type of institution: 1972-2007

Year	Male			Female		
	Total	2-year	4-year	Total	2-year	4-year
1972	1.89	†	†	1.81	†	†
1973	1.87	1.32	1.79	1.77	1.28	1.61
1974	1.85	1.37	1.74	1.77	1.23	1.66
1975	1.83	1.44	1.73	1.75	1.32	1.62
1976	1.87	1.32	1.76	1.82	1.35	1.72
1977	1.87	1.41	1.79	1.77	1.36	1.65
1978	1.87	1.36	1.79	1.76	1.36	1.63
1979	1.88	1.41	1.78	1.76	1.35	1.62
1980	1.86	1.40	1.70	1.81	1.49	1.66
1981	1.86	1.52	1.77	1.82	1.46	1.72
1982	1.95	1.48	1.81	1.90	1.54	1.76
1983	2.03	1.63	1.89	1.91	1.48	1.82
1984	1.99	1.53	1.95	1.90	1.55	1.80
1985	2.08	1.69	2.06	2.02	1.61	1.97
1986	2.06	1.70	1.97	1.99	1.50	1.89
1987	2.09	1.60	2.09	2.04	1.65	1.95
1988	2.24	1.85	2.17	2.20	1.88	2.19
1989	2.35	1.84	2.32	2.27	1.97	2.28
1990	2.29	1.85	2.26	2.24	1.87	2.28
1991	2.33	1.98	2.25	2.22	2.09	2.32
1992	2.24	1.89	2.21	2.23	1.98	2.27
1993	2.33	2.00	2.30	2.17	1.91	2.25
1994	2.05	1.76	2.03	1.99	1.63	2.05
1995	2.03	1.82	2.03	1.95	1.54	1.98
1996	2.09	1.76	2.08	1.92	1.80	2.07
1997	2.01	1.71	2.07	1.87	1.75	2.04
1998	1.96	1.74	1.96	1.93	1.79	2.08
1999	1.95	1.63	1.97	1.95	1.67	2.02
2000	2.13	1.83	2.10	1.88	1.59	1.98
2001	2.01	1.59	2.01	1.97	1.66	2.03
2002	1.88	1.56	1.91	1.82	1.64	1.94
2003	1.97	1.67	1.97	1.86	1.61	1.96
2004	1.95	1.65	1.96	1.74	1.63	1.93
2005	1.94	1.77	2.03	1.77	1.64	1.94
2006	1.90	1.73	1.97	1.87	1.70	1.95
2007	1.78	1.57	1.86	1.79	1.67	1.90

† Not applicable.

SOURCE: U.S. Department of Commerce, Census Bureau, Current Population Survey (CPS), October Supplement, 1972-2007.